



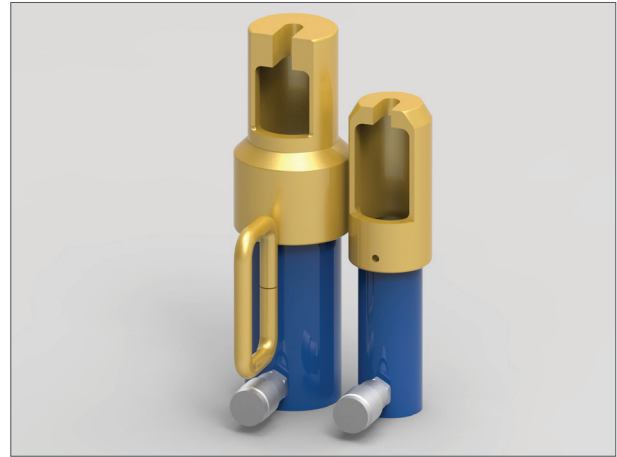
SWAGING JACK

Features

- Swages a barrel and wedge set to the end of prestressing cable to create an anchor point.
- Light weight, able to be used with a hand pump. These units can be used anywhere.

Specifications

Capacity: 10T / 25T @ 10,000 psi
 Strand: 12.7 (0.5") & 15.2 (0.6")
 Finish: Gold zinc plate
 Dimensions: 285mm (H) x 137mm (D)
 x 74mm (W) (10T)
 344mm (H) x 185mm (D)
 x 105mm (W) (25T)
 Weight: 8kg (10T) / 10kg (25T)



Ordering Information

Part No.	Description
IHS-SJ-10	10T Swaging Jack
IHS-SJ-25	25T Swaging Jack

Accessories / Spares

Part No.	Description
IHS-0010-04-SPR	Cylinder 10T / 4" Stroke / Spring Return
IHS-0010-04-SPR-BC	Button Cap to suit IHS-0010-04-SPR Cylinder
IHS-0010-04-SPR-SK	Seal Kit to suit IHS-0010-04-SPR Cylinder
IHS-0025-04-SPR	Cylinder 25T / 4" Stroke / Spring Return
IHS-0025-04-SPR-BC	Button Cap to suit IHS-0025-04-SPR Cylinder
IHS-0025-04-SPR-SK	Seal Kit to suit IHS-0025-04-SPR Cylinder
IHS-QA-06F-06M	Quick action coupler - 3/8" Female body / 3/8" NPT Male thread
IHS-QA-06-PLUG	Quick action coupler protection plug - 3/8"
IHS-SJ-10-CASE	10T Swaging Jack Carry Case
IHS-SJ-25-CASE	25T Swaging Jack Carry Case

T
E
N
I
P
M
E
N
T
U
Q
E
G
N
I
S
S
E
S
T
R
E
S
S
I
N
G
H

P: +61 3 9645 1522 | E: mail@mcmillaneng.com.au | W: www.mcmillaneng.com.au